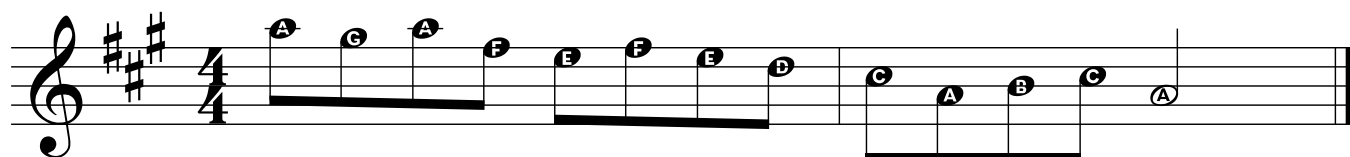


Fiddle Tune Ending

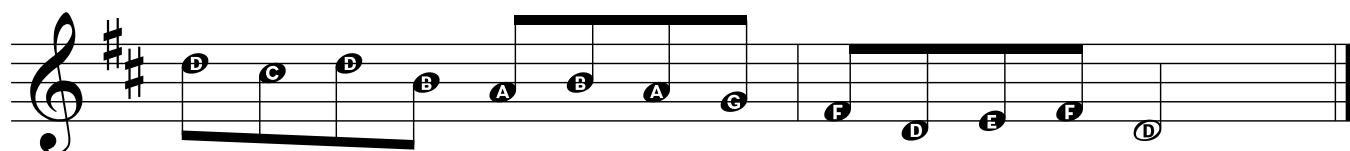
How do a bunch of people playing a tune over and over know when to stop? Often the person leading (usually the fiddler) will raise a foot. But what if everyone is having such a good time they don't notice the foot?

Here is a standard phrase that is universally recognized as a signal to quit.

In the key of A:



Same thing in the key of D



You can also play the phrase above and add "Shave and a Haircut":

